

LSU Health Science Center

## LSU Health Digital Scholar

---

Medical Research Day

2021 Medical Research Day Posters

---

Oct 19th, 12:00 AM

### Obese microenvironment contributes to MDSC phenotype through epigenetic mechanisms

Rose Luder

*LSU Health Sciences Center- New Orleans*

Ramesh Thyur Puttalingaiah

*LSU Health Sciences Center- New Orleans, rthylu@lsuhsc.edu*

Augusto Ochoa

*LSU Health Sciences Center- New Orleans, AOchoa@lsuhsc.edu*

Maria D. Sanchez Pino

*LSU Health Sciences Center- New Orleans, msanc2@lsuhsc.edu*

Follow this and additional works at: <https://digitalscholar.lsuhscc.edu/sommrd>



Part of the [Oncology Commons](#)

---

#### Recommended Citation

Luder, Rose; Thyur Puttalingaiah, Ramesh; Ochoa, Augusto; and Sanchez Pino, Maria D., "Obese microenvironment contributes to MDSC phenotype through epigenetic mechanisms" (2021). *Medical Research Day*. 70.

<https://digitalscholar.lsuhscc.edu/sommrd/2021MRD/Posters/70>

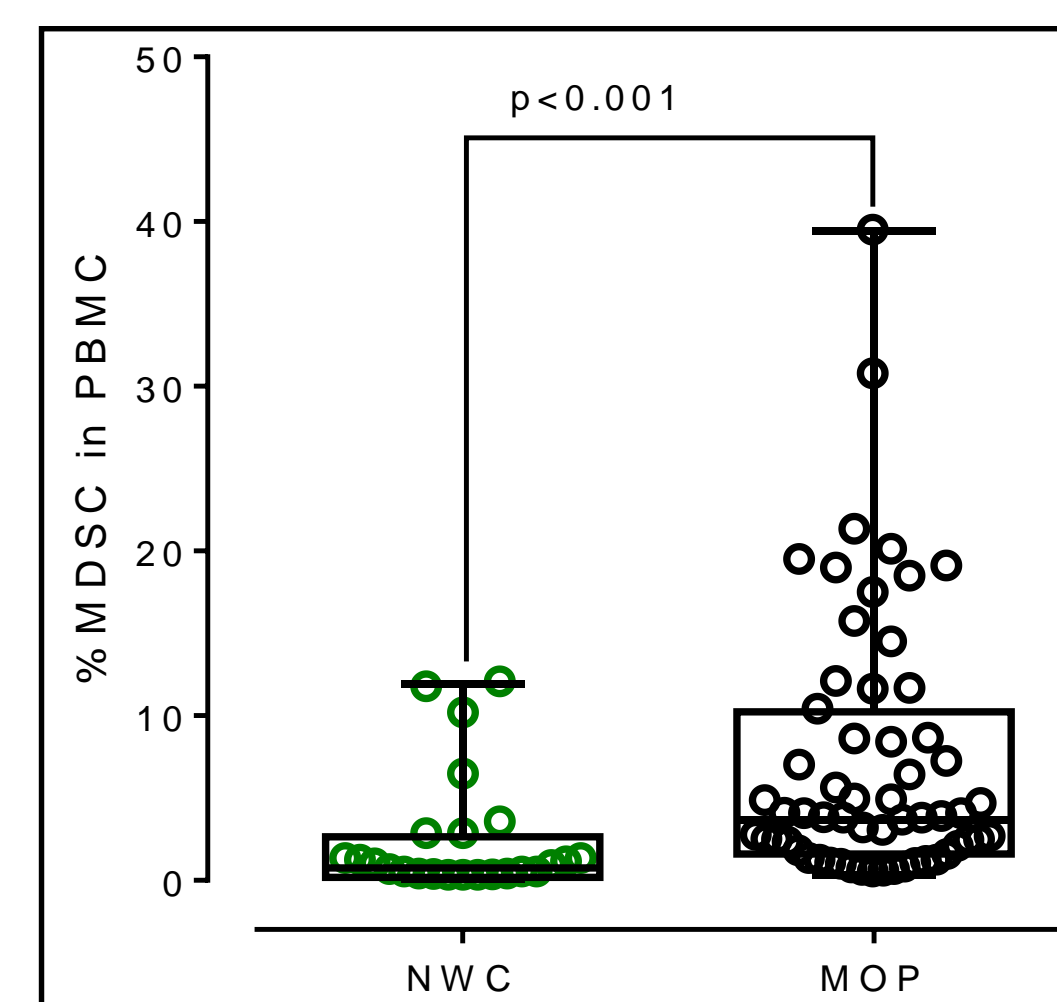
This Event is brought to you for free and open access by the School of Medicine at LSU Health Digital Scholar. It has been accepted for inclusion in Medical Research Day by an authorized administrator of LSU Health Digital Scholar. For more information, please contact [aolini@lsuhsc.edu](mailto:aolini@lsuhsc.edu).

## Introduction

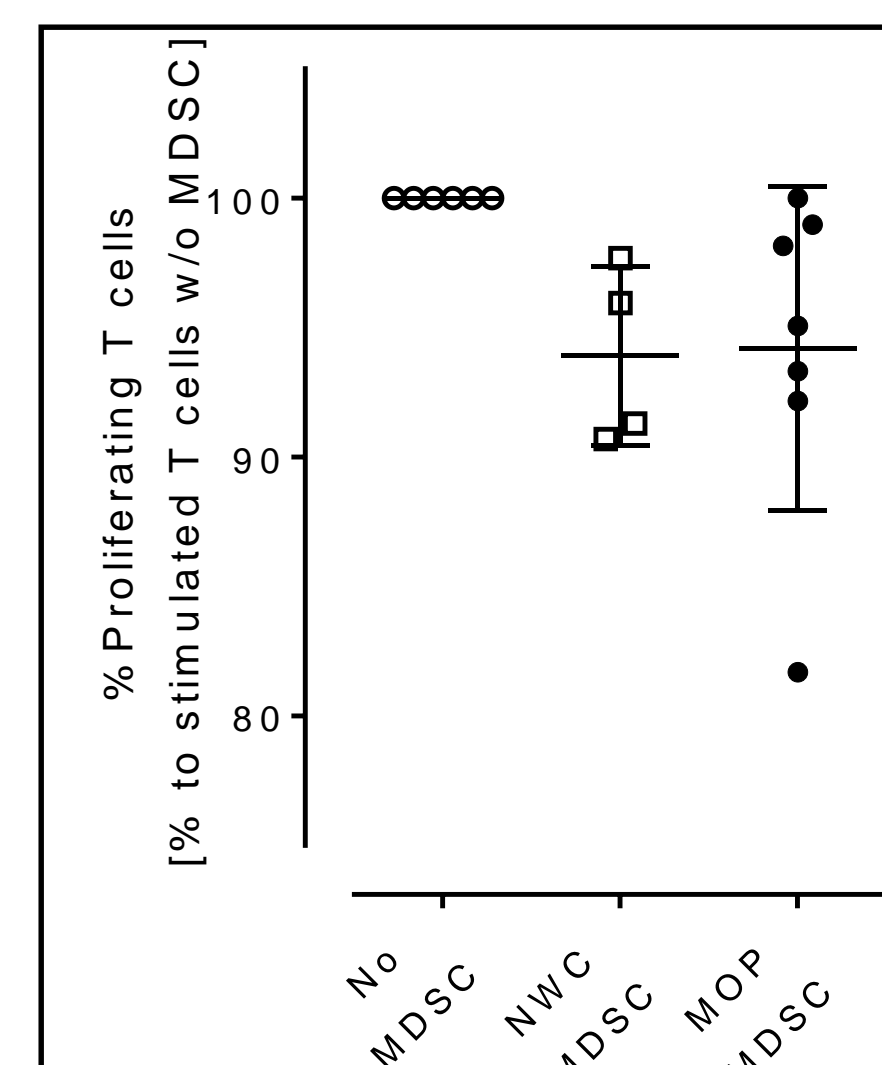
Patients with obesity are more susceptible to developing several different types of cancer. Myeloid derived suppressor cells (MDSC) promote tumor growth by blocking anti-tumor T cell responses. The expanded number and heightened function of MDSC have been found in mouse models of obesity. Our preliminary data show that patients with morbid obesity (body mass index [BMI] > 40 kg/m<sup>2</sup>) also have increased numbers of MDSC in peripheral blood, which could contribute to the cancer risk. Here, we investigate whether the cholesterol, as a factor of obese microenvironment, regulates the immunosuppressive phenotype of MDSC via epigenetic mechanisms.

MDSC exert their immunosuppressive effects through the upregulation of several genes that codify for arginase-1 (*Arg1*), iNOS (*NOS2*), and PD-L1 (*CD274*). Transcriptome analysis by comparing purified MDSC from obese patients and normal weight controls (NWC) led us to hypothesize that expression of key genes such as arginase-1 is regulated by chromatin remodeling by the demethylase JMJD3. Additionally, ATAC-seq data obtained by comparing MDSC from mice fed with high-fat and low-fat diets under *in vitro* stimuli with cholesterol showed open chromatin regions uncovering motifs for EZH2 in regulatory elements of *NOS2* gene, suggesting that function of MDSC is also modulated by the methyltransferase EZH2. Together, the RNA-seq and ATAC-seq data led us to hypothesize that the inflammatory milieu or deregulated metabolic factors in obesity, such as cholesterol, have a key role in the regulation of immunosuppressive gene expression in MDSC through epigenetic mechanisms involving EZH2 and JMJD3.

## Preliminary data

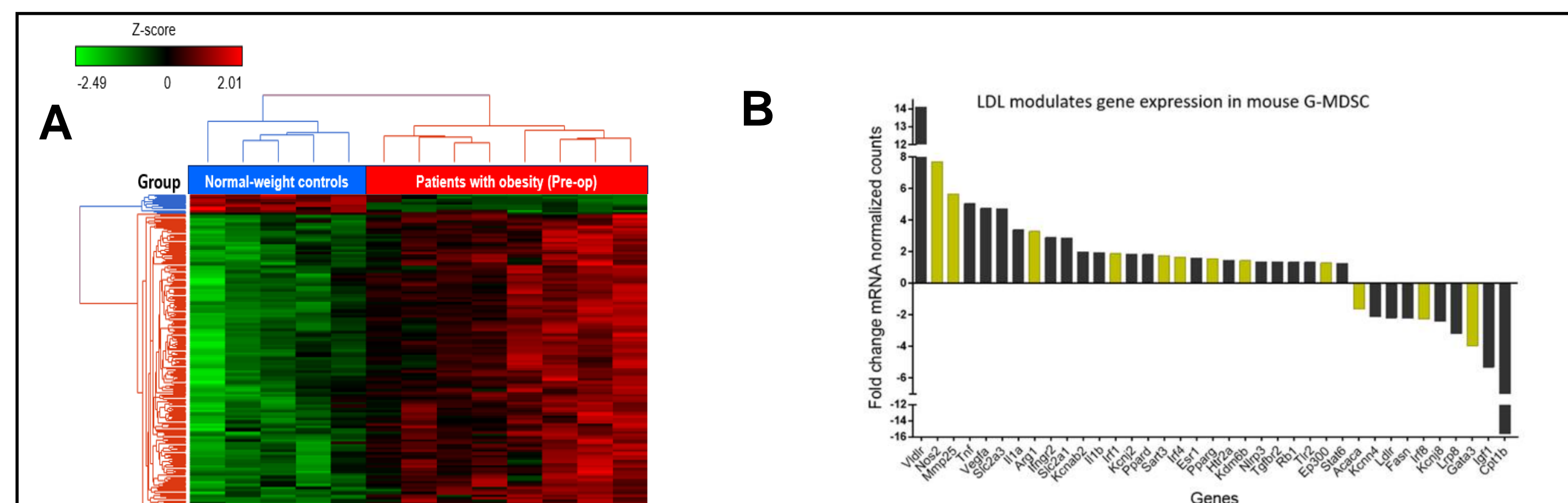


**Figure 1:** Morbidly obese patients (MOP) contain a higher percentage of MDSC in peripheral blood as compared to normal weight control patients (NWC)



**Figure 2:** MDSC from morbidly obese patients (MOP) have similar immunosuppressive capacity as compared to MDSC from normal weight control patients (NWC)

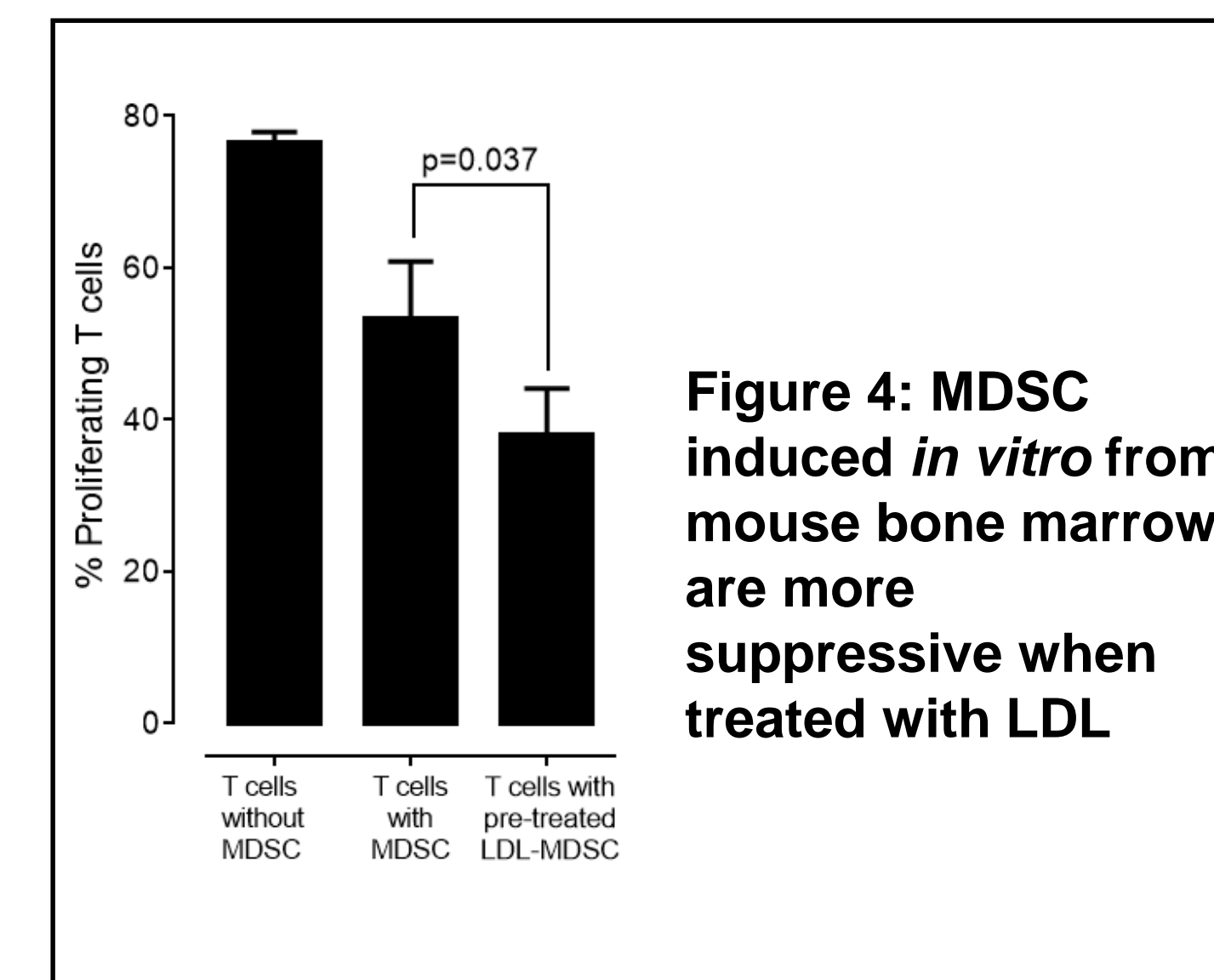
## MDSC in obese patients have altered gene expression



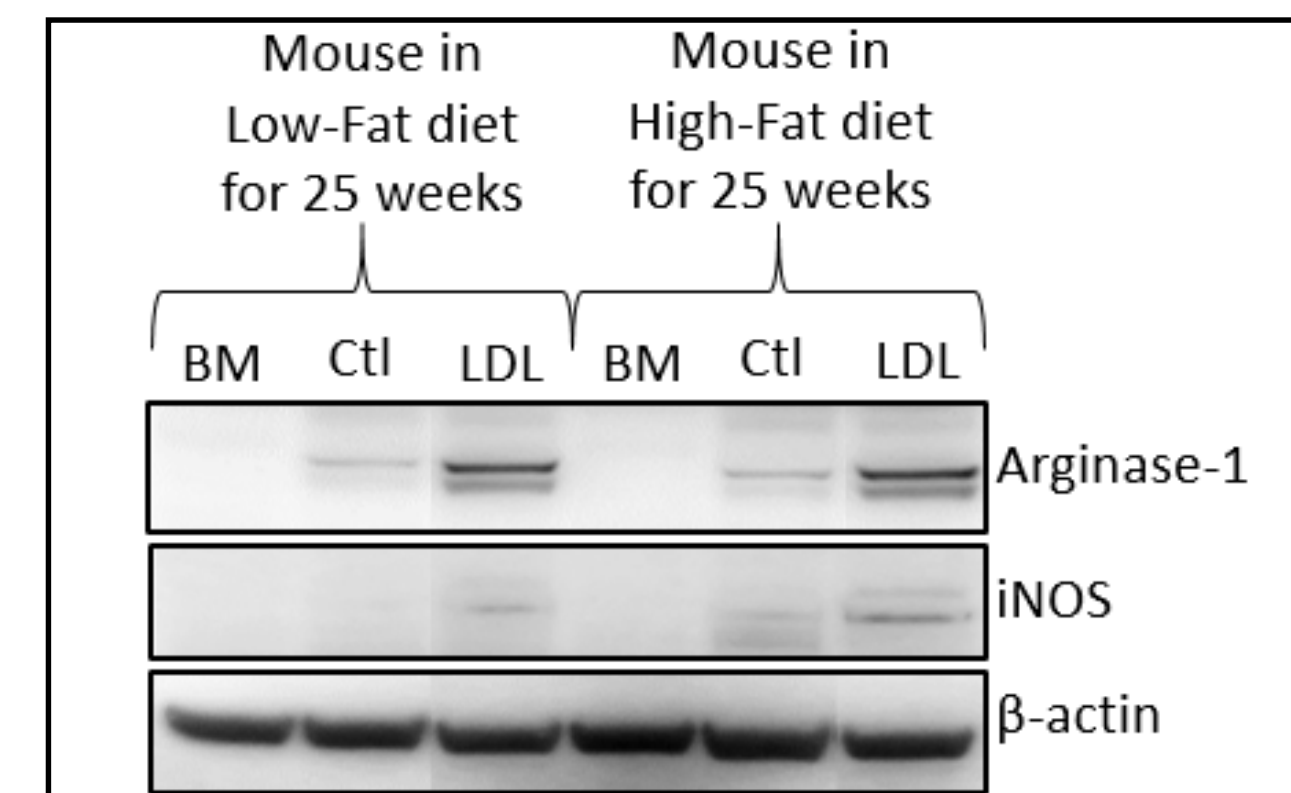
**Figure 3:** (A) Dendrogram and Heat-Map for Unsupervised Hierarchical Clustering in MDSC from 8 Patients with obesity and 5 Controls, based on the 238 genes differentially expressed. (B) Genes associated with MDSC function, such as *Arg1*, were upregulated in mouse bone-marrow derived MDSC pretreated with LDL. Upregulated genes displayed had significance with a p-value < .05

## Results

### LDL modulates the suppression capacity of MDSC *in vitro*

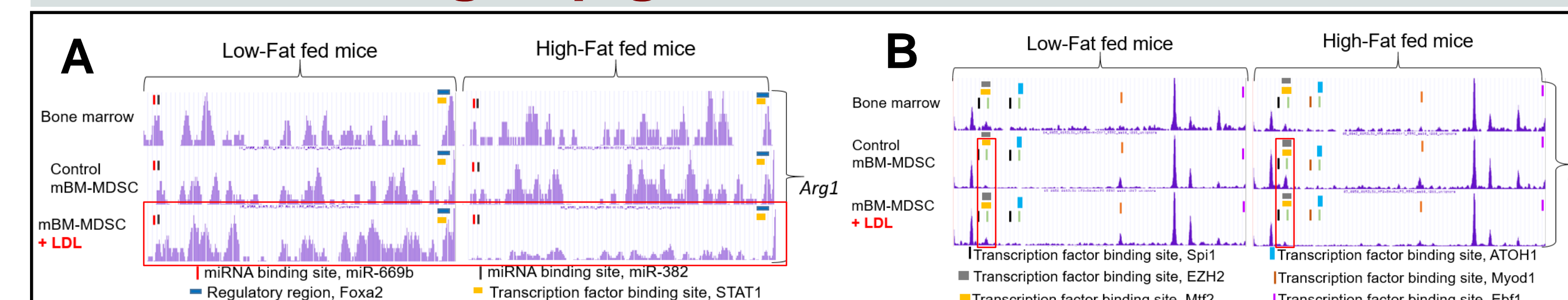


**Figure 4:** MDSC induced *in vitro* from mouse bone marrow are more suppressive when treated with LDL



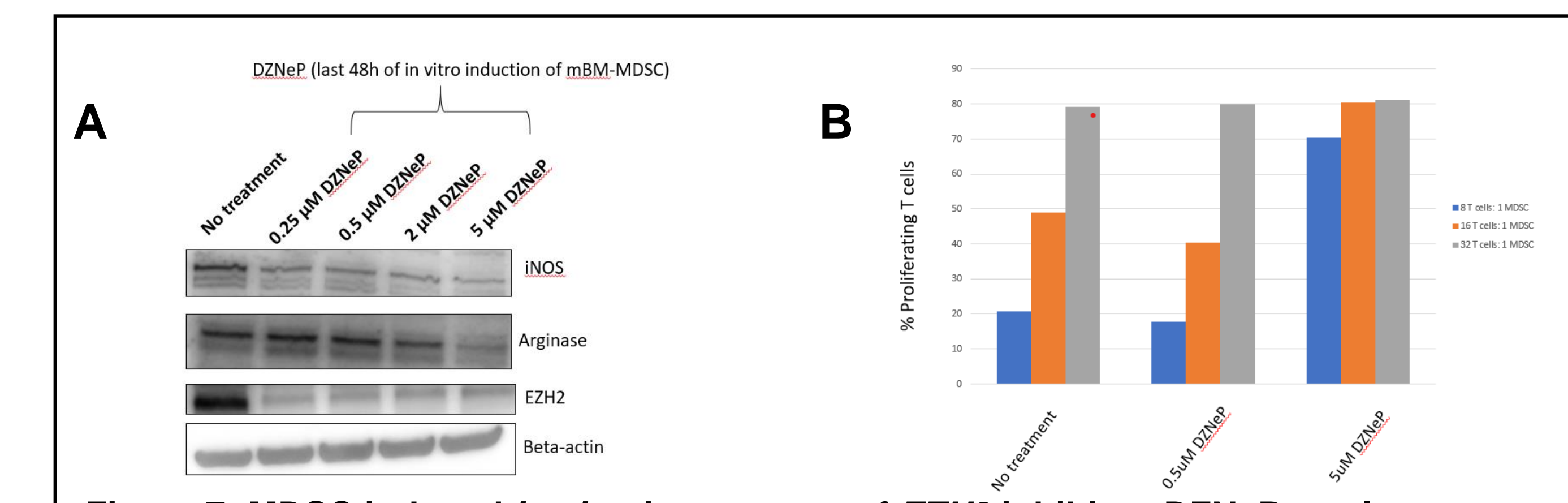
**Figure 5:** LDL-cholesterol induce higher expression of arginase-1 and iNOS. BM indicates bone marrow; Ctl, control; LDL, low-density lipoprotein

### ATAC-seq data indicates that LDL could affect MDSC function through epigenetic mechanisms

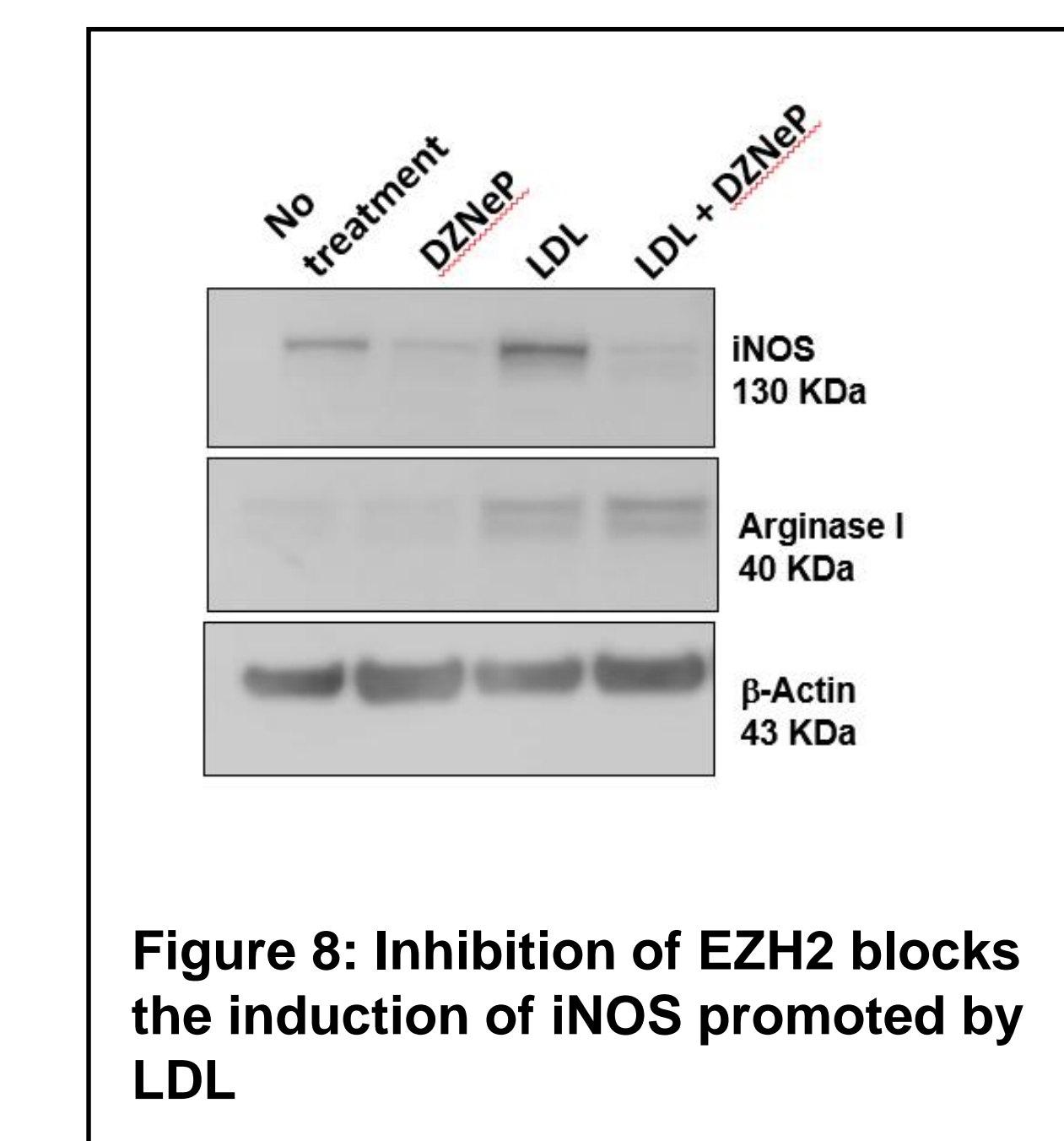


**Figure 6:** Differences in open chromatin pattern in *Arg1* gene and accessibility for histone 3 methyltransferase EZH2 in the regulatory region on *NOS2* gene in MDSC from obese and lean mice (high-fat vs low-fat fed mice) when treated with LDL *in vitro*. (A) Chromatin accessibility profile in *Arg1* and (B) *NOS2* genes from ATAC-seq analysis. mBM-MDSC indicates mouse bone marrow-derived MDSC

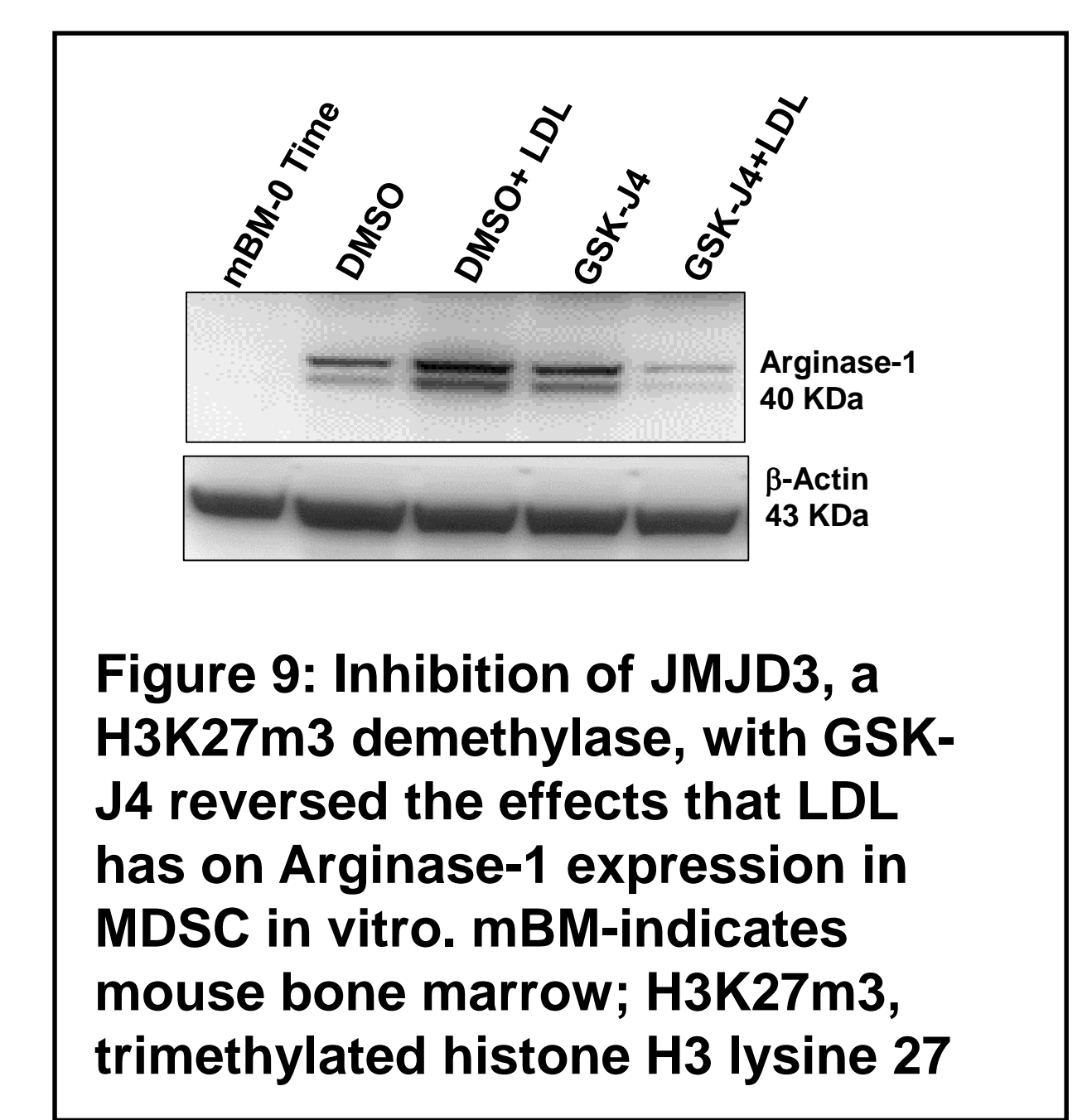
## Inhibition of EZH2 and JMJD3 modulates MDSC function



**Figure 7:** MDSC induced *in vitro* in presence of *EZH2* inhibitor, DZNeP, are less immunosuppressive. (A) Effect of DZNeP on protein expression levels of iNOS, Arginase-1 and EZH2 and (B) suppression capability of MDSC on T cell proliferation. DZNeP indicates 3-deazaneplanocin A; mBM-MDSC, mouse bone marrow-derived MDSC



**Figure 8:** Inhibition of EZH2 blocks the induction of iNOS promoted by LDL



**Figure 9:** Inhibition of JMJD3, a H3K27m3 demethylase, with GSK-J4 reversed the effects that LDL has on Arginase-1 expression in MDSC *in vitro*. mBM-indicates mouse bone marrow; H3K27m3, trimethylated histone H3 lysine 27

## Conclusions

- MDSC are increased in patients with morbid obesity
- Cholesterol-LDL increases expression levels of arginase-1 and iNOS and enhanced immunosuppressive capacity of MDSC induce *in vitro* from mouse bone marrow.
- Cholesterol-LDL differentially modify chromatin accessibility in key genes of MDSC from obese and lean mice
- Expression of iNOS and suppression function on T cells are significantly reduced by inhibition of EZH2 with DZNeP
- Inhibition of JMJD3 with GSK-J4 alters the expression of arginase-1 induced by LDL
- These findings suggest that epigenetic modulators such as EZH2 and JMJD3 could be a promising druggable targets to modify the function of MDSC in obesity and reduce their potential role in cancer development and progression.

**Acknowledgments:** This work was supported in part by grants from National Institutes of Health (NIH; P20CA233374), Pennington Biomedical NORC (P30DK072476), LSU-NO Stanley S. Scott Cancer Center and Louisiana Clinical and Translational Science Cancer (LACaTS; U54-GM104940).